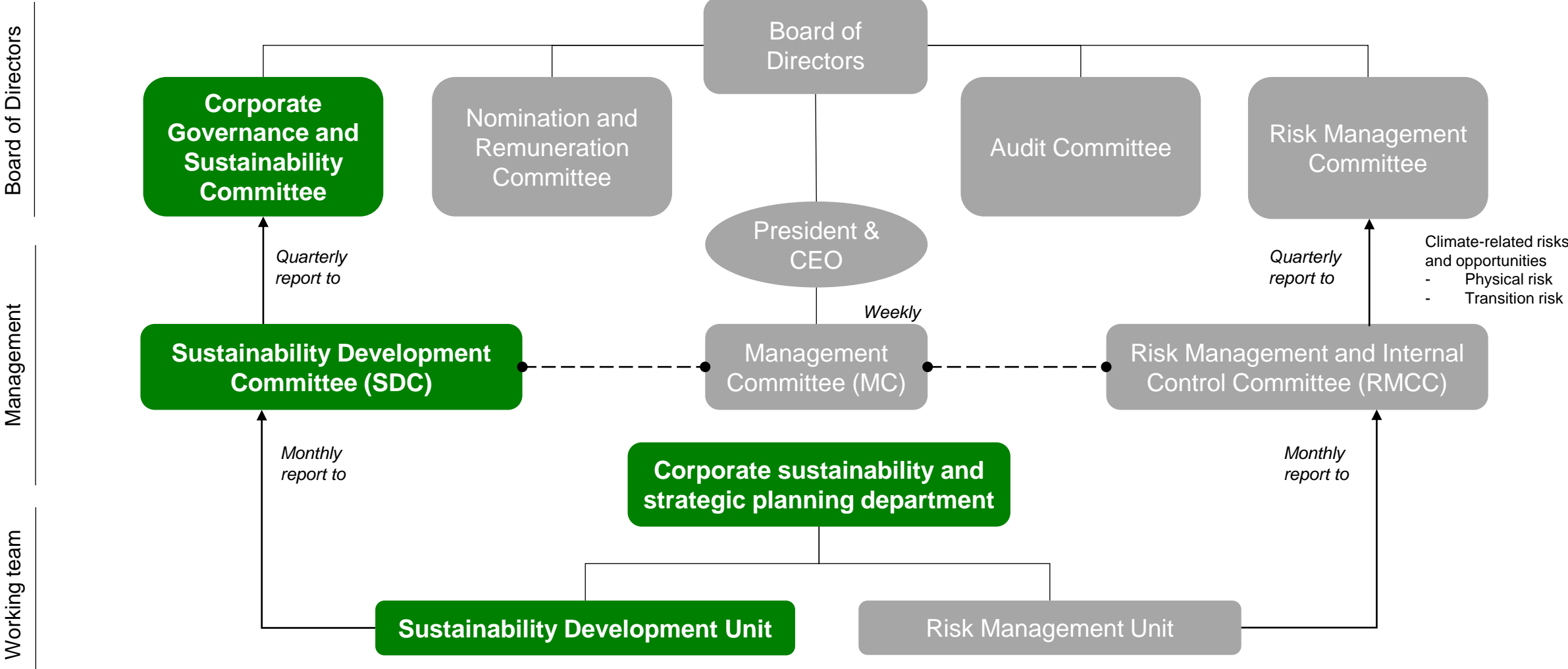


# SDC Governance Structure

The sustainability development committee will directly report to CG board level, and any linkage topic will report to MC



Board of Director

Corporate Governance and Sustainability Committee

Management Committee

chaired by CEO

Sustainability Development Committee (SDC)

chaired by SEVP

Corporate Strategy Planning and Business Development

Secretary of SDC  
Corporate Strategy and Sustainability Department



Sustainability Strategy  
Climate Change Strategy  
Direction  
Policies



Corporate KPI  
Investment related to Climate Change



Individual KPI  
Climate Change Initiatives